

Ultrasound Imaging: Obstetrics

Extraordinary vision. Every stage. Easy imaging.

From early pregnancy to birth, the health of an expectant mother and her fetus is your priority. That's why we make it our priority to help ensure you have extraordinary vision every step of the way. Distinguish tiny structures with stunning clarity. Confidently explore fetal images and help detect abnormalities in early stages. And scan patients with ease.

The Voluson* family of products empowers you with advancements in women's health ultrasound for obstetrics so you can make clinical decisions with enhanced confidence.

- Help standardize fetal heart images by automatically displaying important, industry-recommended views of the fetal heart from a single volume acquisition using **Sonography-based Volume Computer-Aided Display (SonoVCAD*heart)**.
- See anatomical information displayed in a single image throughout the growth stages of the pregnancy using curved array transducers with **wide sector** technology that helps deliver a large field of view.
- Help detect fine details early in the first trimester and enhance your diagnostic confidence with the **high resolution 4D endovaginal probe (RIC6-12D)**.
- Enhance your clinical confidence with **HDLive**, a rendering mode that brings amazing realism to ultrasound and helps improve your image clarity with **V-SRI** (Volume SRI) an advanced speckle reduction imaging tool.
- **SonoNT** (Sonography-based Nuchal Translucency) is a technology that helps provide semi-automatic, standardized measurements of the Nuchal Translucency as early as 11 weeks and can integrate easily into your workflow.

- Achieve a sensitive vascular study with **HD-Flow***, a bi-directional Doppler feature that helps reduce overwriting and increases sensitivity over conventional color Doppler.
- Enhance workflow and connectivity by combining your Voluson system with **ViewPoint* 6** – the powerful ultrasound image and data management solution from GE Healthcare.

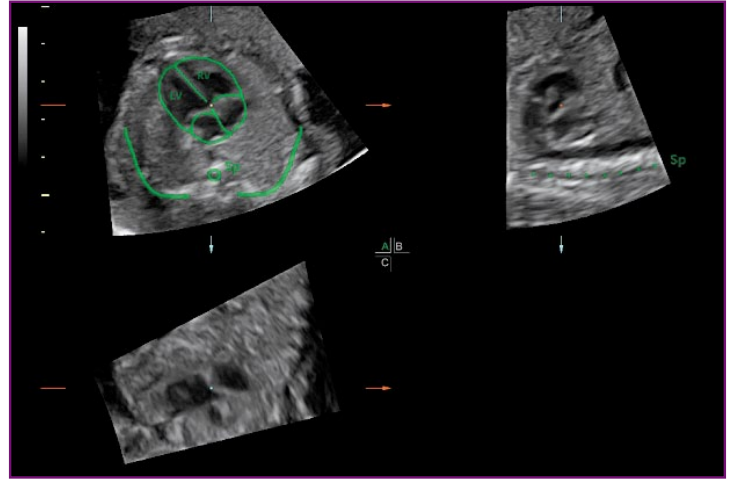
All of these advancements, from image quality to ultrasound automation to ergonomic comfort, have been designed specifically for you. It's your feedback that drives our commitment to continually evolve the Voluson family of products to empower you to deliver extraordinary patient care.



When we say extraordinary vision, this is what we're talking about.



3D skeleton rendering of an 18-week fetus using coronal curved-line Volume Contrast Imaging (VCI-C) clearly demonstrating the normal cervical and thoracic spine and the 12 ribs.



SonoVCAD reference image, displaying graphic plane that is matched to the four-chamber heart image; once matched, the system can automatically obtain five separate views of the fetal heart.



HDlive rendered image of a first trimester fetus to help increase clinical confidence.



First trimester fetus showing SonoNT measurement.

GE Healthcare
9900 Innovation Drive
Wauwatosa, WI 53226
U.S.A.

www.gehealthcare.com



© 2012 General Electric Company – All rights reserved.

General Electric Company reserves the right to make changes in specifications and features shown herein, or discontinue the product described at any time without notice or obligation. Contact your GE Representative for the most current information.

GE, GE Monogram, Voluson, ViewPoint, SonoVCAD, and HD-Flow are trademarks of General Electric Company.

*Trademark of General Electric Company.

GE Medical Systems Ultrasound & Primary Care Diagnostics, a General Electric company, doing business as GE Healthcare.

DOC1143056