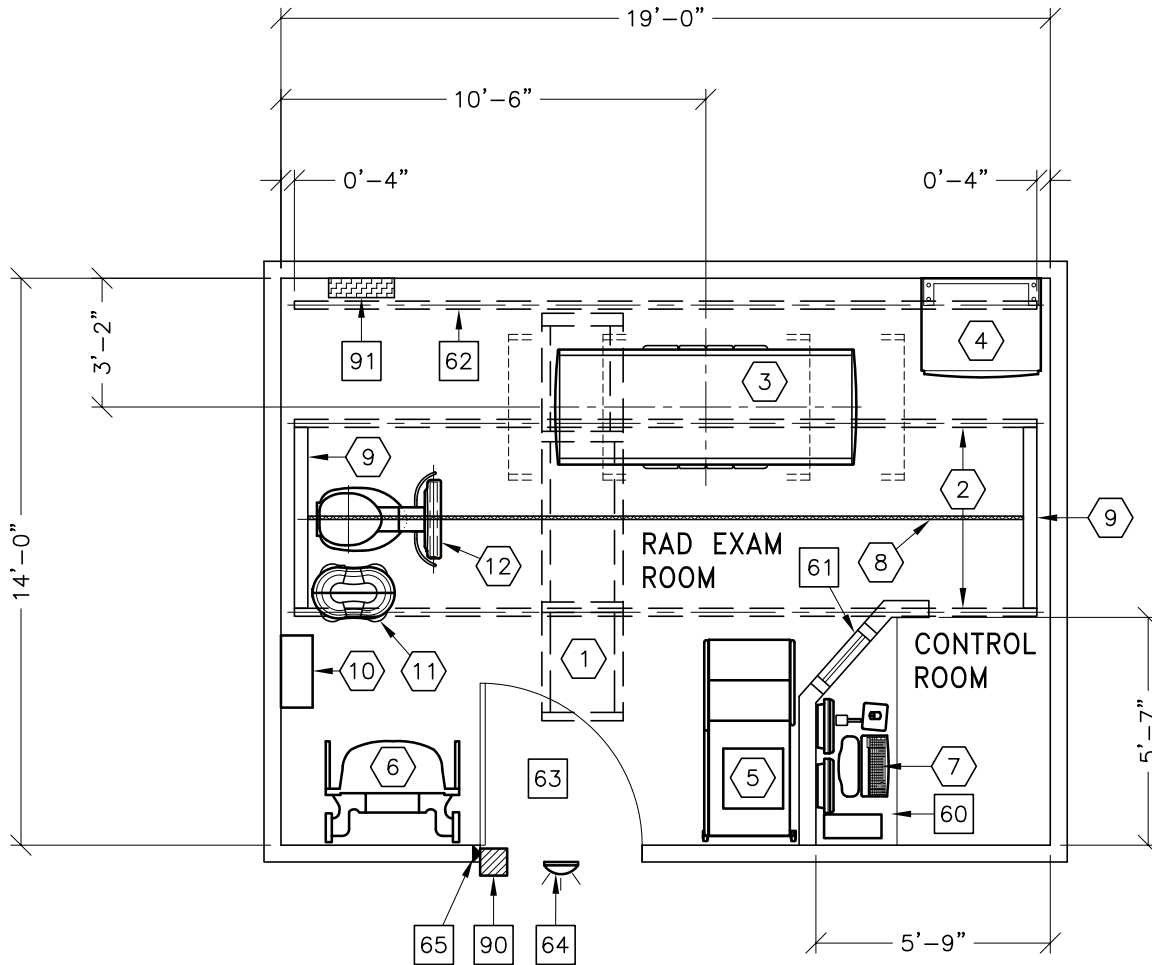




**DEFINIUM 8000**



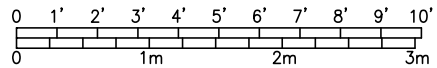
**THE FOLLOWING TOMO & IMAGE PASTING APPLICATIONS ARE POSSIBLE WITH THE LAYOUT AS SHOWN IN THESE DRAWINGS**

NOTE: NOT ALL TOMO/IMAGE PASTING OPTIONS MAY BE INCLUDED IN YOUR EQUIPMENT ORDER. PLEASE CONSULT YOUR EQUIPMENT ORDER OR QUOTE FOR VALIDATION.

	YES	NO
WALLSTAND TOMO & IMAGE PASTING	X	
CROSS TABLE TOMO (TO WALLSTAND)	X	
ENSIFERA TOMO (EXTENDED WALLSTAND)		X
TABLE TOMO	X	

**CAUTION:**  
SEE PRE-INSTALLATION MANUAL #5137435-100 FOR REQUIRED CLEARANCE AREA OF THE DEFINIUM OTS LONGITUDINAL DRIVE BELT ASSEMBLY.

ROOM DIMENSIONS	LENGTH & WIDTH	CEILING HEIGHT
MINIMUM:	16'-0" x 13'-0" [4.87m x 3.96m]	8'-10" [2.6m]



SEE APPENDIX "A" FOR POWER SPECIFICATIONS

ROOM PLAN LOCATED ON PAGE 1-134

ITEM	QUANTITY	ITEM DESCRIPTION	WEIGHT	HEAT OUTPUT
①	1	XT RADIOGRAPHIC SUSPENSION WITH INBOARD MOUNTING.	628 lbs	501 btu
②	2	LONGITUDINAL STATIONARY RAIL FOR XT SUSPENSION	68	
③	1	DIGITAL ELEVATING TABLE	1058 lbs	1102 btu
④	1	SYSTEMS CABINET	679 lbs	1098 btu
⑤	1	WEIGHT BEARING STAND	101 lbs	
⑥	1	IMAGE PASTING BARRIER	200 lbs	
⑦	1	OPERATORS CONSOLE	74 lbs	1235 btu
⑧	1	LONGITUDINAL DRIVE BELT 1 IN. WIDE		
⑨	2	ANCHOR RAILS		
⑩	1	GRID HOLDER (FIELD VERIFY IDEAL LOCATION)	35 lbs	
⑪	1	DETECTOR SUPPORT ASSEMBLY	97 lbs	
⑫	1	DIGITAL CHEST UNIT	595 lbs	819 btu
***** CUSTOMER/CONTRACTOR SUPPLIED AND INSTALLED ITEMS *****				
60		COUNTER TOP FOR EQUIPMENT- MINIMUM DEPTH 24 IN. AND ADDITIONAL SHELVING MAY BE REQUIRED BELOW COUNTER TOP FOR PC TOWER. PROVIDE GROMMETED OPENINGS AS REQUIRED TO ROUTE CABLES.		
61		CONTROL WALL, 7 FT. HIGH WITH LEAD GLASS VIEWING WINDOW.		
62		CABLE DRAPE RAIL.		
63		MINIMUM DOOR OPENING FOR EQUIPMENT DELIVERY IS 44 IN. W x 83 IN. H [1118mm x 2108mm], CONTINGENT ON A 96 IN. [2438mm] CORRIDOR WIDTH		
64		X-RAY ON WARNING LIGHT - AVAILABLE FROM GE SUPPLY CALL: 800-200-9760 GE CAT. NO. WXIABWW-OF-XIU		
65		DOOR LIMIT SWITCH (NEEDED ONLY IF REQUIRED BY STATE/LOCAL CODES)		
90		X-RAY ROOM WARNING LIGHT CONTROL PANEL REFERENCE JUNCTION POINT 'XRLC' ON SHEET 'E1' FOR DETAILED DESCRIPTION -E4502RL FOR WARNING LIGHT CONTROL ONLY.		
91		MAIN DISCONNECT, REFERENCE JUNCTION POINT 'A' ON SHEET E1 FOR DETAILED DESCRIPTION. CAT. NO. E4502ST OR WITH AUTO RESTART E4502RP. (20 W x 48 H x 6.68 in. D)		

ENVIRONMENT

Ambient Operation Temperature: 59-95° (F)  
 Allowable Temperature Change: 18° (F) per hour  
 Humidity: 20-80 percent non condensing  
 Allowable Humidity Change: 10 percent per hour  
 Max - Altitude: 8000 ft. above sea level