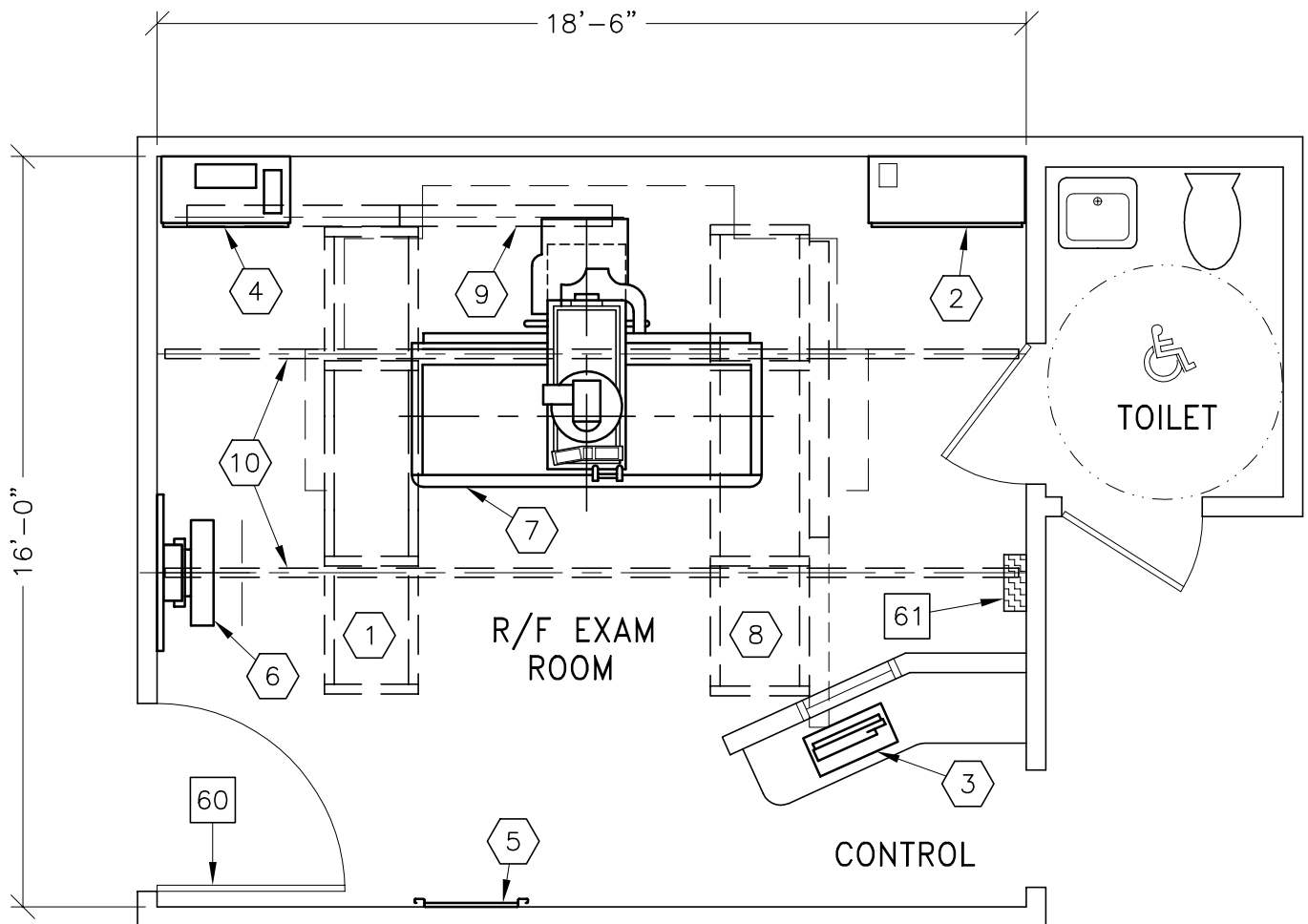


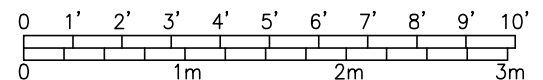


ADVANTX HF/LEGACY/XT INBOARD/SG-60

RECOMMENDED CEILING HEIGHT
9'-6" [2895mm]



ROOM DIMENSIONS	LENGTH & WIDTH	CEILING HEIGHT
MINIMUM:	16'-6" x 12'-6" [5.03m x 3.81m]	9'-0" [2.74m]



SEE APPENDIX "A" FOR POWER SPECIFICATIONS

ROOM PLAN LOCATED ON PAGE 2-50

ITEM	QUANTITY			
①		ITEM DESCRIPTION	WEIGHT	HEAT OUTPUT
①	1	XT SUSPENSION WITH TV MONITOR ON BOOM SUPPORT.	276 lbs	215 btu
②	1	ADVANTX HF 80 GENERATOR	910 lbs	1000 btu
③	1	ADVANTX SYSTEM OPERATORS CONSOLE	15 lbs	195 btu
④	1	LEGACY POSITIONER CABINET	591 lbs	3276 btu
⑤	1	TABLE ACCESSORY RACK	90 lbs	
⑥	1	SG-60 BUCKY STAND	265 lbs	
⑦	1	LEGACY R&F TABLE WITH INTELLIGENT SPOT FILM DEVICE	3444 lbs	1024 btu
⑧	1	XT RADIOGRAPHIC SUSPENSION WITH INBOARD MOUNTING <VHLA>	560 lbs	
⑨	1	LONGITUDINAL CABLE SUPPORT	35 lbs	
⑩	2	LONGITUDINAL STATIONARY RAIL FOR XT SUSPENSION	68 lbs	
<p>***** CUSTOMER/CONTRACTOR SUPPLIED AND INSTALLED ITEMS *****</p>				
60	MINIMUM DOOR OPENING FOR EQUIPMENT DELIVERY IS 44 IN. W X 83 IN. H [1118MM X 2108MM], CONTINGENT ON A 96 IN. [2438MM] CORRIDOR WIDTH			
61	MAIN DISCONNECT, REFERENCE JUNCTION POINT 'A' ON SHEET E1 FOR DETAILED DESCRIPTION. <14.5 W X 24 H X 5.75 IN. D>			

ENVIRONMENT

Ambient Operation Temperature: 55-75° (F)
 Allowable Temperature Change: 15° (F) per hour
 Humidity: 20-80 percent non condensing
 Allowable Humidity Change: 10 percent per hour
 Max - Altitude: 8000 ft. above sea level