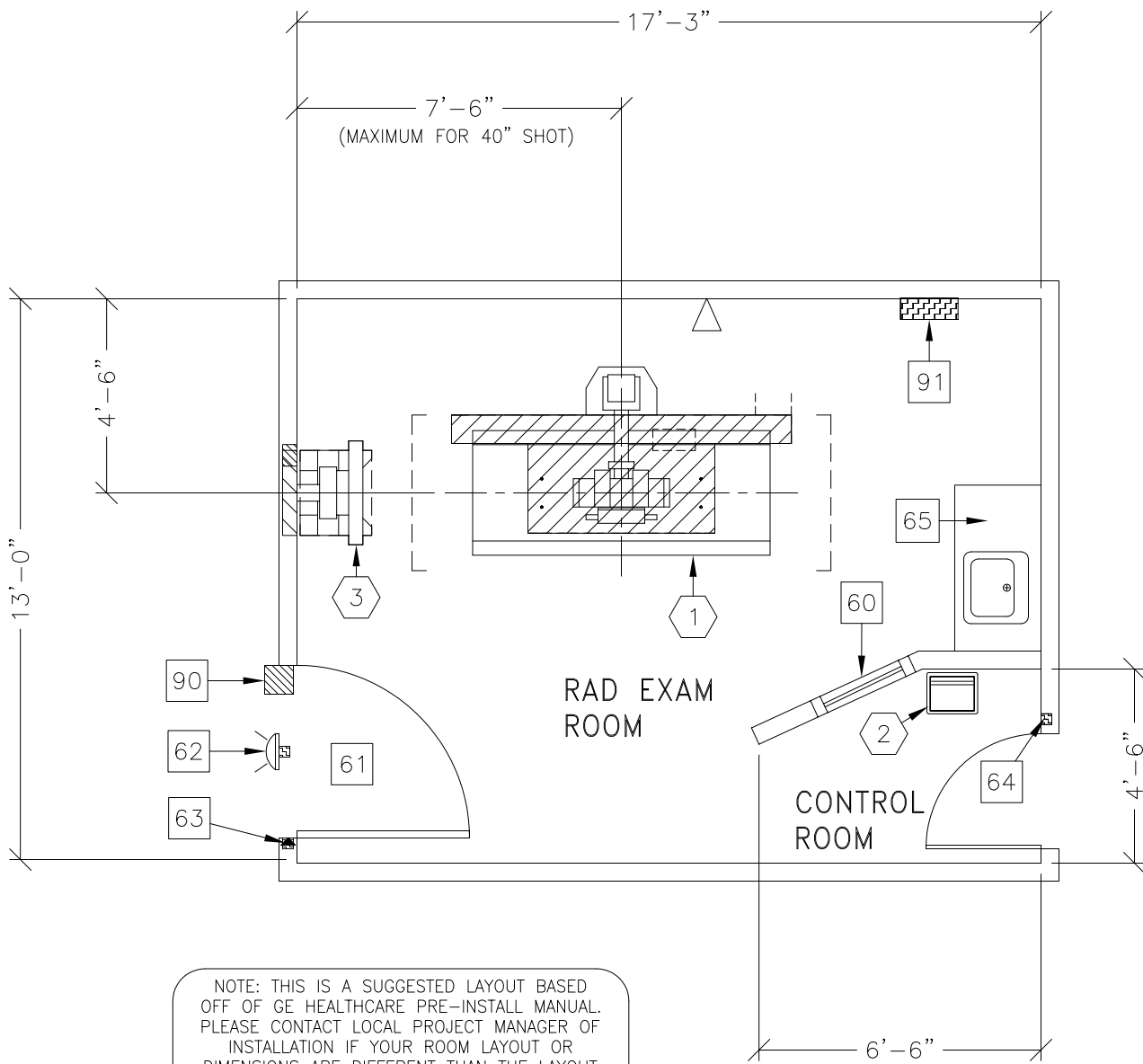




SILHOUETTE VR SYSTEM

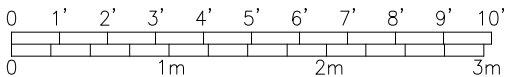
THE FOLLOWING SHOTS ARE NOT AVAILABLE IN THIS LAYOUT:

180° OFF-TABLE IMAGING



NOTE: THIS IS A SUGGESTED LAYOUT BASED OFF OF GE HEALTHCARE PRE-INSTALL MANUAL. PLEASE CONTACT LOCAL PROJECT MANAGER OF INSTALLATION IF YOUR ROOM LAYOUT OR DIMENSIONS ARE DIFFERENT THAN THE LAYOUT SHOWN.

ROOM DIMENSIONS	LENGTH & WIDTH	CEILING HEIGHT
MINIMUM:	13'-0" x 11'-0" [4.0m x 3.4m]	8'-2 1/2" [2.5m]
RECOMMENDED:	19'-8" x 19'-8" [6.0m x 6.0m]	9'-10" [3.0m]



ROOM PLAN LOCATED ON PAGE 1-120

ITEM	QUANTITY	ITEM DESCRIPTION	WEIGHT	HEAT OUTPUT
①	1	SILHOUETTE VR TABLE WITH TUBESTAND	972 lbs	4822 btu
②	1	SILHOUETTE VR CONTROL CONSOLE ON PEDESTAL	33 lbs	98 btu
③	1	SILHOUETTE VR WALL STAND	264 lbs	
***** CUSTOMER/CONTRACTOR SUPPLIED AND INSTALLED ITEMS *****				
60		CONTROL WALL, 7 FT. HIGH WITH LEAD GLASS VIEWING WINDOW		
61		MINIMUM DOOR OPENING FOR EQUIPMENT DELIVERY IS 48 IN. W x 80 IN. H [1219mm x 2032mm], CONTINGENT ON A 78 IN. [1981mm] CORRIDOR WIDTH		
62		X-RAY ON WARNING LIGHT - AVAILABLE FROM GE SUPPLY CALL: 800-200-9760 GE CAT. NO. WXIABWW-OF-XIU		
63		DOOR LIMIT SWITCH <NEEDED ONLY IF REQUIRED BY STATE/LOCAL CODES>		
64		EMERGENCY OFF SWITCH <NEEDED ONLY IF REQUIRED BY STATE/LOCAL CODES>		
65		COUNTER TOP WITH SINK & BASE CABINETS		
90		X-RAY ROOM WARNING LIGHT CONTROL PANEL REFERENCE JUNCTION POINT 'XRLC' ON SHEET 'E1' FOR DETAILED DESCRIPTION -E4502RL FOR WARNING LIGHT CONTROL ONLY.		
91		MAIN DISCONNECT, REFERENCE JUNCTION POINT 'A' ON SHEET E1 FOR DETAILED DESCRIPTION, CAT. NO. E4502ST OR WITH AUTO RESTART E4502RP. <20 W x 48 H x 6.68 in. D>		

ENVIRONMENT

Ambient Operation Temperature: 55-75° (F)
 Allowable Temperature Change: 15° (F) per hour
 Humidity: 20-80 percent non condensing
 Allowable Humidity Change: 10 percent per hour
 Max - Altitude: 8000 ft. above sea level