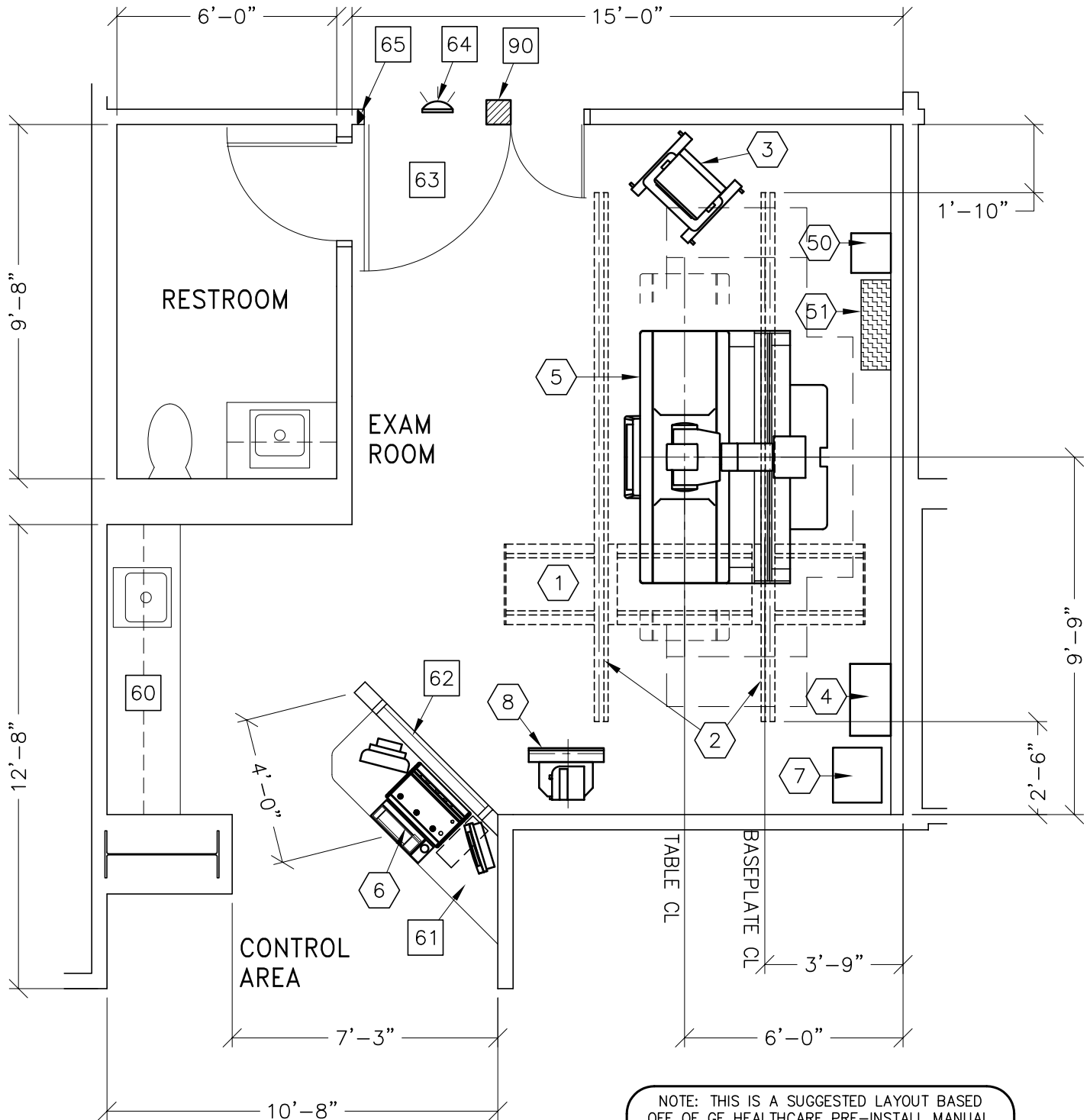


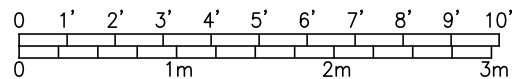


**PRECISION RXi**  
**RECOMMENDED CEILING HEIGHT**  
**9'-10" [2997mm]**



NOTE: THIS IS A SUGGESTED LAYOUT BASED OFF OF GE HEALTHCARE PRE-INSTALL MANUAL. PLEASE CONTACT LOCAL PROJECT MANAGER OF INSTALLATION IF YOUR ROOM LAYOUT OR DIMENSIONS ARE DIFFERENT THAN THE LAYOUT SHOWN.

ROOM DIMENSIONS	LENGTH & WIDTH	CEILING HEIGHT
MINIMUM:	17'-0" x 14'-0" [5.18m x 4.27m]	8'-7" [2.55m]



SEE APPENDIX "A" FOR POWER SPECIFICATIONS

ROOM PLAN LOCATED ON PAGE 3-50

ITEM	QUANTITY	ITEM DESCRIPTION	WEIGHT	HEAT OUTPUT
①	1	X-RAY TUBE ON OVERHEAD TUBE SUSPENSION SYSTEM	496 lbs	511 btu
②	1	OTS STATIONARY RAILS	198 lbs	
③	1	TV MONITOR ON MOBILE MONITOR CART	44 lbs	34 btu
④	1	TABLE CABINET	374 lbs	1245 btu
⑤	1	PRECISION RX; ELEVATING TABLE	2200 lbs	211 btu
⑥	1	INTEGRATED CONSOLE (NON-PEDESTAL)	365 lbs	296 btu
⑦	1	PRECISION RX; GENERATOR	235 lbs	75 btu
⑧	1	PRECISION RX; NON-TILTING WALLSTAND	374 lbs	126 btu
⑤⑩	1	STEP DOWN TRANSFORMER	198 lbs	
⑤①	1	MAIN DISCONNECT CONTROL PANEL GEMS CAT. NO. E4502KP	169 lbs	
***** CUSTOMER/CONTRACTOR SUPPLIED AND INSTALLED ITEMS *****				
⑥⑩		COUNTER TOP WITH SINK, BASE AND WALL CABINETS		
⑥①		COUNTER TOP FOR EQUIPMENT- MINIMUM DEPTH 24 IN. AND ADDITIONAL SHELVING MAY BE REQUIRED BELOW COUNTER TOP FOR PC TOWER. PROVIDE GROMMETED OPENINGS AS REQUIRED TO ROUTE CABLES.		
⑥②		CONTROL WALL, 7 FT. HIGH WITH LEAD GLASS VIEWING WINDOW.		
⑥③		MINIMUM DOOR OPENING FOR EQUIPMENT DELIVERY IS 48 IN. W x 80 IN. H [1219mm x 2032mm], CONTINGENT ON A 78 IN. [1981mm] CORRIDOR WIDTH		
⑥④		X-RAY ON WARNING LIGHT - AVAILABLE FROM GE SUPPLY CALL: 800-200-9760 GE CAT. NO. WXIABWW-OF-XIU		
⑥⑤		DOOR LIMIT SWITCH (NEEDED ONLY IF REQUIRED BY STATE/LOCAL CODES)		
⑨⑩		X-RAY ROOM WARNING LIGHT/ROOM LIGHTING CONTROL PANEL REFERENCE JUNCTION POINT 'XRLC' ON SHEET 'E1' FOR DETAILED DESCRIPTION -CAT. NO. E4502SS FOR WARNING LIGHT & ROOM LIGHT CONTROL.		

ENVIRONMENT

Ambient Operation Temperature: 55-75° (F)  
 Allowable Temperature Change: 15° (F) per hour  
 Humidity: 20-80 percent non condensing  
 Allowable Humidity Change: 10 percent per hour  
 Max - Altitude: 8000 ft. above sea level